

COLD COMPACTION DENSIFIERS

We provide a complete line of cold compaction foam densifiers. Designed as an alternate solution to melt densifiers which produce block without heat. These compressed blocks are a marketable recycling product ready for shipment. We offer several makes and models in varying sizes and production capacities.

FD-300SC

DENSIFIES

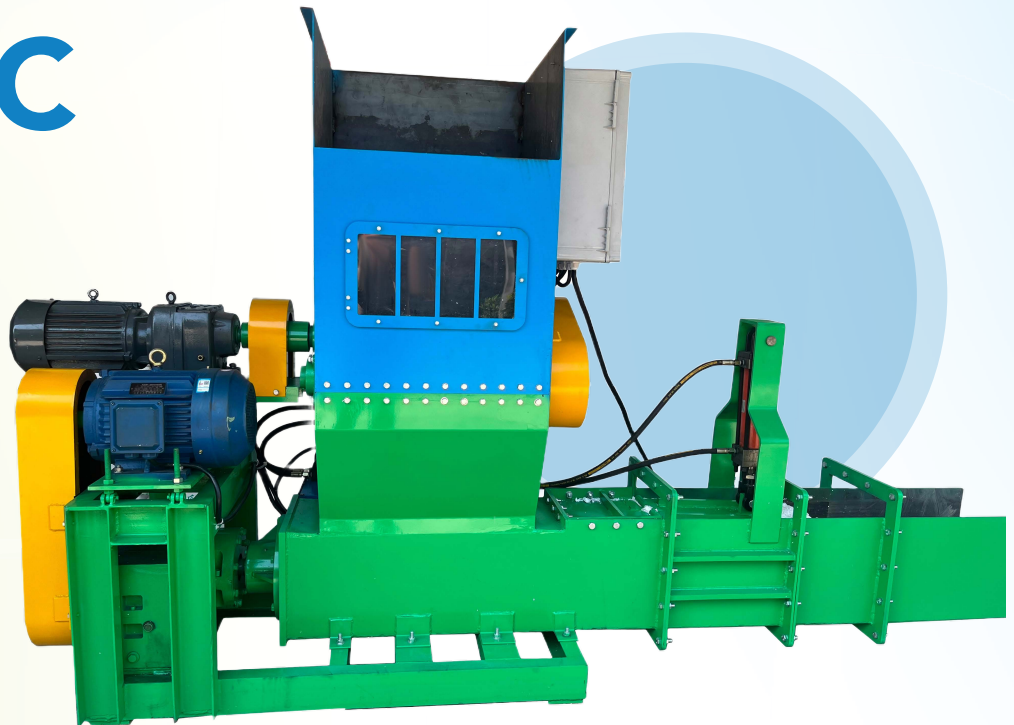
Polystyrene (EPS)
PIR

FEATURES

Processes up to 120 kg /Hour of Loose EPS
Foam Reduces Foam Volume
by Approximately 50 to 1

OPTIONS

Silo / Bag and Frame
Foam Shredder



Technical Specifications

Power kW	12.25 kW
Voltage (V)	230V/380V/460V three-phase
Weight (lbs./kg)	2866 lbs. (1300 kg)
Max. EPS Capacity	265 lbs./hour (120 kg)
Chute Opening (W x H)	11-3/4" x 11-3/4" (300 x 300 mm)
Footprint (W x D x H)	118" x 39" x 67" (3341 x 2768 x 1975 mm)